

Dear Newtown Area Resident,

As the 3rd oldest operating EMS service in Bucks County we continue to be progressive in our technology, patient care protocols, and training to ensure you and your family receive the best care in an emergency. With your support in 2023, we were able to grow our staff by 12 personnel, while adding new medications to our formulary and completing needed repairs to our aging facility.

Our ability to remain at-the-ready to respond to your call 24 hours a day, 7 days per week, every day of the year heavily relies on your support of our organization. In 2023, we were fortunate to have the largest ever amount of public support from our residents through donations we received in this subscription program. We equally were able to cover a significant amount of deductibles and co-pays for subscription members.

As we forge ahead in 2024 we will continue to face challenges including recruitment and retention, education mandates, and an anticipated purchase of another ambulance. Your financial contribution as a subscription member is part to our whole budget combined with service revenue and municipal revenue that helps us maintain a constant state of readiness.

I hope you will consider supporting us once again by becoming a subscriber in 2024. Subscribers not only help us financially; it helps you as a patient by having financial protection in the event you need to call for an ambulance. All subscribers who use our service will have no co-pay or deductible to worry about. You can focus on your health and wellbeing, and we will do the rest.

Yours in good health,

Evan N. Resnikoff

Evan N. Resnikoff, M.S. NRP
Chief of Operations
215-968-3500 x114



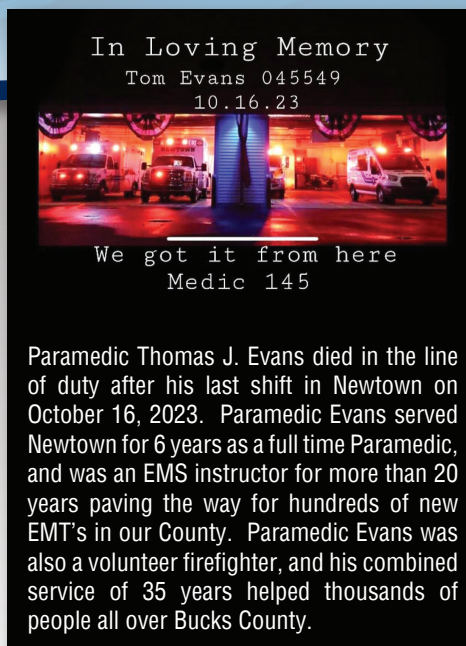
Newtown Emergency Medical Services

2651 S. Eagle Rd.
Newtown, PA 18940

Phone: 215-968-3500
Option 7



follow us facebook
@NewtownAmbulancesquad
or visit us on the web at:
www.newtownems.org



Paramedic Thomas J. Evans died in the line of duty after his last shift in Newtown on October 16, 2023. Paramedic Evans served Newtown for 6 years as a full time Paramedic, and was an EMS instructor for more than 20 years paving the way for hundreds of new EMT's in our County. Paramedic Evans was also a volunteer firefighter, and his combined service of 35 years helped thousands of people all over Bucks County.

NEWTOWN

EMERGENCY MEDICAL SERVICES

Established 1952

2024

Annual Subscription
Program Information





NEWTOWN

EMERGENCY MEDICAL SERVICES



SUBSCRIPTION RATES:

Household Membership: \$70.00 covers you and anyone in your family residing at your address. This membership level also includes any visitors to your residence such as family or friends if we respond to care for them. This membership level does also provide coverage if you are anywhere in our response area and use our service, such as a public place or doctor's office.

Individual Membership: \$55.00 covers you in the event you use our service at your place of residence, or anywhere in our response area.

Senior Membership Age 65 and up: \$50.00 covers you and your spouse or partner living at your residence. Also will provide coverage if we provide service to you and your spouse or partner anywhere in our response area such as a public place or doctor's office.

Single Senior Membership Age 65 and up: \$40.00 covers you in the event you use our service at your place of residence, in a public place, or doctor's office anywhere in our service area.

Additional Donations: Many households and individuals also include with our subscription drive an additional donation to help sustain our operations. *We very much appreciate each and every subscriber, and any additional support provided.*

*Subscriptions received before 1/1/2024 will be active from 1/1/2024 through 12/31/2024. Subscriptions received after 1/1/2024 will be active from the date of receipt through 12/31/2024.

WHY YOU SHOULD SUBSCRIBE

Our subscription program will help you by covering the cost of any co-pays or deductibles. If you have no insurance, you are covered 100%!

If you have insurance and are not in our subscription program and you need Emergency Ambulance Service, you could be responsible for any co-pay's or deductibles which cost between \$50 through the total cost of the service!

Fees and deductible are governed by your health insurance plan. Consult your benefits administrator or health plan documentation for more information.

HOW TO SUBSCRIBE

Is fast and easy

1 PAY BY MAIL:

Complete the enclosed donation payment form. Tear-off the small portion for your records and mail the large portion along with your payment in the envelope provided. Checks should be made payable to: [Newtown EMS](#).

2 PAY ON-LINE:

Go directly to our secure website at newtownambulance.org to make a credit or debit card payment on-line.

3 CALL IN CREDIT CARD INFORMATION:

Contact our office at 215-968-3500 and dial option 7. We will process your credit/debit card payment for you based on the information you provide.



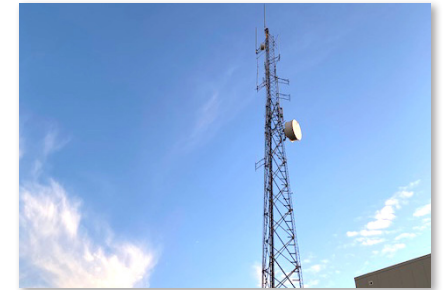
To check the status or ask questions regarding your subscription please contact Pat Miele at 215-968-3500 and dial option 7.

Only 25% of our budget revenue is received from Property tax income and municipal budgets. The balance of our operating funds are derived from billing of insurance companies, and patient payments for co-pays and deductibles. Approximately 3% of our revenue is from grants and donations.

The subscription program for 2024 is crucial to support operations as follows:

- 2024 Ambulance purchase
- Building repairs and capital improvements.
- Staffing costs (there are no grants to pay for personnel in EMS)
- Public programs including Child Safety Seat inspections
- Personal Protective equipment to ensure the safety of our EMT's and Paramedics

WHAT HAPPENS WHEN SOMEONE DIALS 911?



- Your call is answered by a certified Emergency Medical Dispatcher from the Bucks County Department of Emergency Communications.
- You will be asked for the address of the location of the incident, including the Township or Boro.
- Depending on the type of emergency, the dispatcher may provide instructions to help until the ambulance arrives.
- Concurrently, the nearest ambulance equipped for the level of care needed will be sent to your location.
- If units from Newtown are on other calls, the next nearest ambulance will be dispatched per mutual aid agreements.

WHO COMES TO HELP?

- Paramedics are recertified every 2 years through continuing education through the PA Dept. of Health. They must also pass a practical skill exam with our Medical Director annually. Paramedics provide advanced level treatment including cardiac monitoring, defibrillation, insertion of advance airway devices, and administration of medications.
- Emergency Medical Technicians (EMTs) are recertified by the PA Dept. of Health every 3 years. They provide basic first aid, administer O₂, control bleeding, and many other basic, lifesaving skills including use of Automatic External Defibrillators (AEDs).